

V1KU installation guide

The V1KU board requires a connection to your PC host via a certified high-speed USB cable. The directions for installing the driver depend on the operating system you are running. Please refer to the appropriate section below for further details.

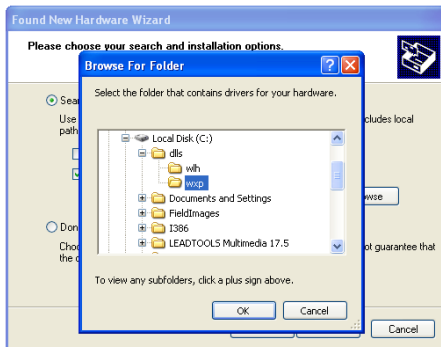
Windows XP	1
Windows 7 and Vista	2
Linux (Ubuntu 11.04)	2
Troubleshooting	3
Disable driver signature enforcement?	3
Desactiver la signature des pilotes	4

Windows XP



In the following dialog box, select the option “Install from a specific location”.

Select “Next”.

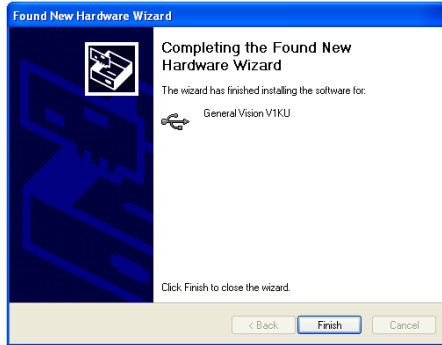


Select “Browse” and navigate to the “wsp” drivers’ directory supplied with the board.

Select “OK”.

Select “Next”. Wait for the driver files to be installed.

If you encounter a message stating the software has not passed Windows Logo testing, choose “Continue Anyway”.



Once finished, select the “Finish” button to complete the installation process.

The V1KU board should now be ready for use.

Windows 7 and Vista

Select the Control Panel > Device Manager and locate the V1KU device in the Universal Serial Bus Controllers. Select the “Update Driver” option and choose “Browse my computer for driver software”. The drivers are located on the CD supplied with the board in the folder Drivers/w7_vista folder.

You have the choice to install a driver for 32-bit (x86) or 64-bit machines. You can find the type of your system under the Control Panel/ System.

Our driver is an unsigned driver. Its use under Windows Vista and 7 may require that you disable the driver signature enforcement each time you reboot the PC to which the V1KU is connected. Refer to the paragraph “Troubleshooting”.

Linux (Ubuntu 11.04)

note: modifications may have to be made to operate on other versions/flavors of Linux

1. A copy of the "v1ku.rules" file needs to be added to the path:
/etc/udev/rules.d/v1ku.rules

This can be done by running the following command:
`sudo cp '/home/myname/Desktop/v1ku.rules' '/etc/udev/rules.d/v1ku.rules'`

This file is required in order to be able to read and write to the V1KU device via the USB interface.

2. The correct version of the "libusbJava.so" needs to be included in the application path (the same directory as the executable Java file).

The V1KU SDK comes with two versions, one for Intel 32-bit platforms, and one for ARMv9 embedded.

A 64-bit platform version is in development and will be included when QA testing has been completed. During the interim the 32-bit version works provided you run the 32-bit JDK/JRE.

Troubleshooting

Disable driver signature enforcement?

Our driver is an unsigned driver. Its use under Windows Vista and 7 may require that you disable the driver signature enforcement each time you reboot the PC to which the V1KU is connected.

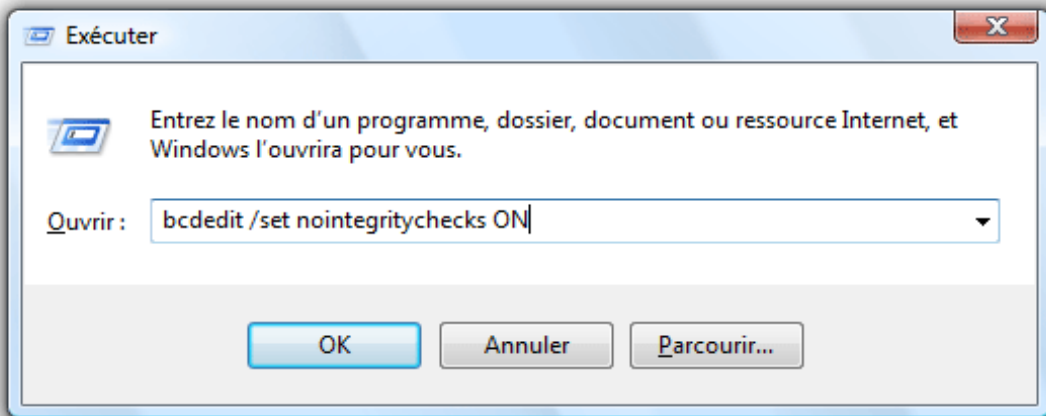
- Press "F8" while boot up of Operating System
- Select the option "Disable Driver Signature Enforcement" and Press enter
- If this fails, you can proceed with the instructions 4, or search for utilities on the web to help you Override Windows driver signature enforcement.
- Right click on cmd.exe and choose **Run as Administrator**
- In the MS-DOS Prompt window type the following: *bcdedit.exe -set loadoptions DISABLE_INTEGRITY_CHECKS*
- Press "ENTER" key
- If you do not wish to go through this procedure each time you start your PC, type the following: *bcdedit.exe -set TESTSIGNING ON*
- Press "ENTER" key
- Restart the computer
- After you reboot you will see a new stamp "Test Mode" at the bottom right of the screen

Desactiver la verification de signature des pilotes

Pour désactiver la vérification de signature des pilotes, il suffit d'ouvrir une boîte **Exécuter** avec le raccourci clavier **Touche Windows + R**.

Tapez ensuite la commande suivante et validez :

bcdedit /set nointegritychecks ON



Redémarrer ensuite votre ordinateur puis installez normalement votre pilote qui posait problème auparavant.

Une fois le pilote installé, nous allons remettre en place la vérification de signature des pilotes. Pour cela, ouvrez à nouveau une boîte **Exécuter** et taper la commande suivante :

bcdedit /set nointegritychecks OFF

